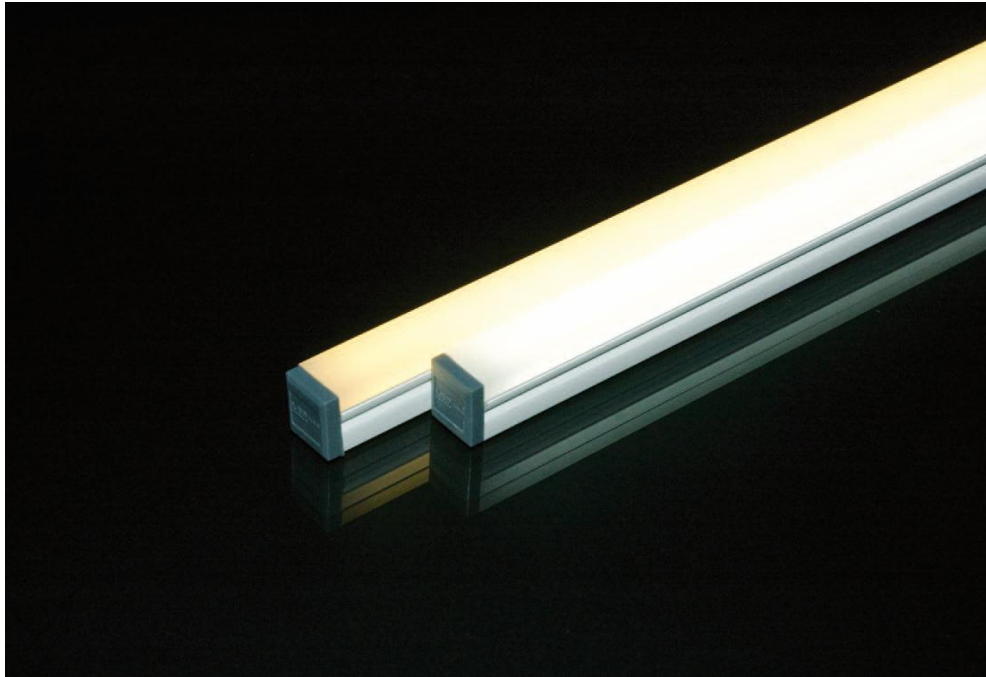


LED Linear Light



Features and Benefits



With outside dimensions of 11 x 14 mm, the special diffuser material produces a very homogenous and can be used in architecture.

The profile can be used as surface mount and flush mount version. For the assembly, mounting clips are available. The flush mount version can be used with an aluminum profile, which is also available.

Ready for connection to 12V DC.

Material: PMMA

Surface: frosted, light dense white

Technical Parameters

- Wire exit linear and 4 x 90°
- From 2000 mm 2 sided power input
- Coextrusion
- Customized sizes in 50 mm steps to max. 3 m on request
- Other configurations, input voltages, connectors and colors on request
- Dimmable
- SMD 3528

Technical Performance

CODE	REFERENCE	COLOR	COLOR TEMPERATURE or WAVELENGTH	DIMENSION (mm)	LED QTY	LIGHT OUTPUT (lm/m)	BEAM ANGLE (°)	VOLTAGE (V DC)	Efficiency (lm/W)	POWER CONSUMPTION (W)	CONTINUOUS CONNECTION (m)
20490005	LED Linear Light-Cree- 2.5W-WDL-12V-272x14x11mm	WDL	5400K	272x14x11	100	500	90	12	52.0	2.5	3
204900012	LED Linear Light-Epistar- 2.5W-WDL-12V-272x14x11mm	WDL	5400K	272x14x11	100	500	90	12	52.0	2.5	3

Lifetime & Warranty

- Warranty 2 years

Applications

Cove light, ceiling light

Architectural lights for canopy, corridor, window

Lights for showcase, shop window

Under or in cabinet lighting

Automotive dash light, limo interior decoration

Exhibition, fair, events highlight

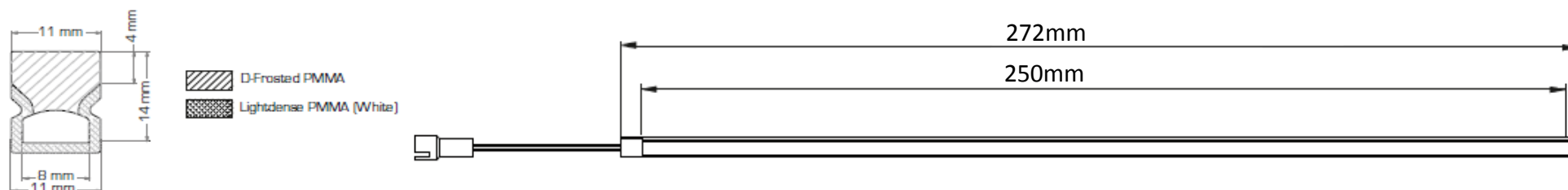
General light replacement

Emergency exit path lighting

Back or edge light of illumination box, panel, signage

Lighting for cinemas, theatres, museum, yachts, transit bus

Dimension



Assembly

Adequate and proper power supply should be applied.

Power supply with voltage DC 12V is not allowed to use. User can calculate the power consumption according to the electrical data, then decide what power supply should be applied.

3 meters are recommended as the reasonable connection length of the connect LEDlines. If more connected, the brightness will be quite lower.

Controller is necessary to dim or create an animation for fixed color