

IC1051A(FROSTED)



## Features and Benefits

### ● Waterproof:

6063 aluminum, small and delicacy, easy to hide and invisible.

### ● Mounting:

fixed by the screws,easy for installation.



### ● Quality components:

- 1.Integrated heating solution to guarantee the LED luminous efficiency and life span.
2. Constant 350mA current driver:

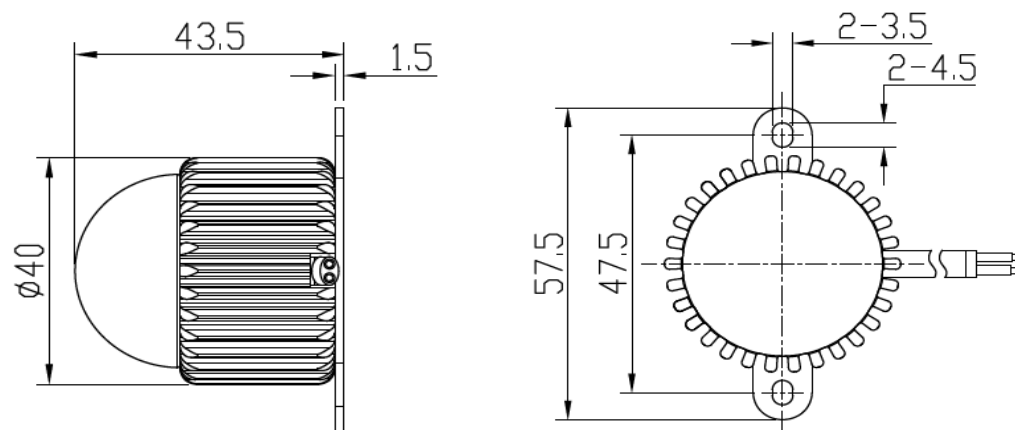
## Technical Parameter

Product type	IC1051A(frosted)
LED	LUMILEDS
Single LED Wattage	1W
LED life span and warranty	50,000 hours, 2 years warranty
LED Quantity	1pc
LED color (single color)	Red Amber Green Blue White Warm White
Beam angle	140 degrees
Reflector	Imported PC material with anti-UV& anti-aging resistance
Housing	6063 aluminum,anode dioxide finish
LED driver	External 350mA constant current driver
Power consumption	1W
Ingress protection	IP66
Classification	III
Ambient operating Temperature	-20°C to +55°C (Ta +10°C)
Net weight	0.069 Kg

## Code & Reference

20112256	IC1051A-1X1W-140deg-RE-R(350mA)(Frosted)
20112257	IC1051A-1X1W-140deg-RE-G(350mA)(Frosted)
20112258	IC1051A-1X1W-140deg-RE-B(350mA)(Frosted)
20112259	IC1051A-1X1W-140deg-RE-A(350mA)(Frosted)
20112260	IC1051A-1X1W-140deg-RE-WDL(350mA)(Frosted)
20112261	IC1051A-1X1W-140deg-RE-NW(350mA)(Frosted)
20112262	IC1051A-1X1W-140deg-RE-WW(350mA)(Frosted)

## Dimensions (mm)



## System Control (single color)

