

IF3014A



Features and Benefits



● Waterproof:

Adopt new patent of air filter device for preventing moisture condensation inside the luminaire.

● Mounting:

A wide variety of mounting brackets available for different applications

● Quality components:

- 1.Integrated heating solution to guarantee the LED luminous efficiency and life span.
- 2.Imported silicon rubber material is adopted for waterproof gask
- 3.Universal voltage converter: AC100-240V+10%

Technical Parameter

Product type	IF3014A
LED	LUMILEDS
Single LED Wattage	1W
LED life span and warranty	50,000 hours, 2 years warranty
LED Quantity	36pcs
LED color (color changing)	Multiple colors can be created
Beam angle	See lens options
Housing	6063 aluminium, anode dioxide finish
Glass material	5 mm thickness tempered glass, Aluminum gray finish
Power input	AC100-240V±10%; 50/60Hz
LED driver	350mA constant driver
Power consumption	52W (color changing)
Anti-static	IEC61000-4 (Level 4)
Ingress protection	IP66
Classification	I
Power supply cable	3x1.00mm ² rubber cable
Signal cable	Double screen for 4 pairs signal cable STP-5E
Control	DMX512 Compatible (1990)
Ambient operating Temperature	-20°C to +55°C (Ta +10°C)
Power factor(PF)	>0.9
Inrush current(Max)	6A
Net weight	5.3 Kg

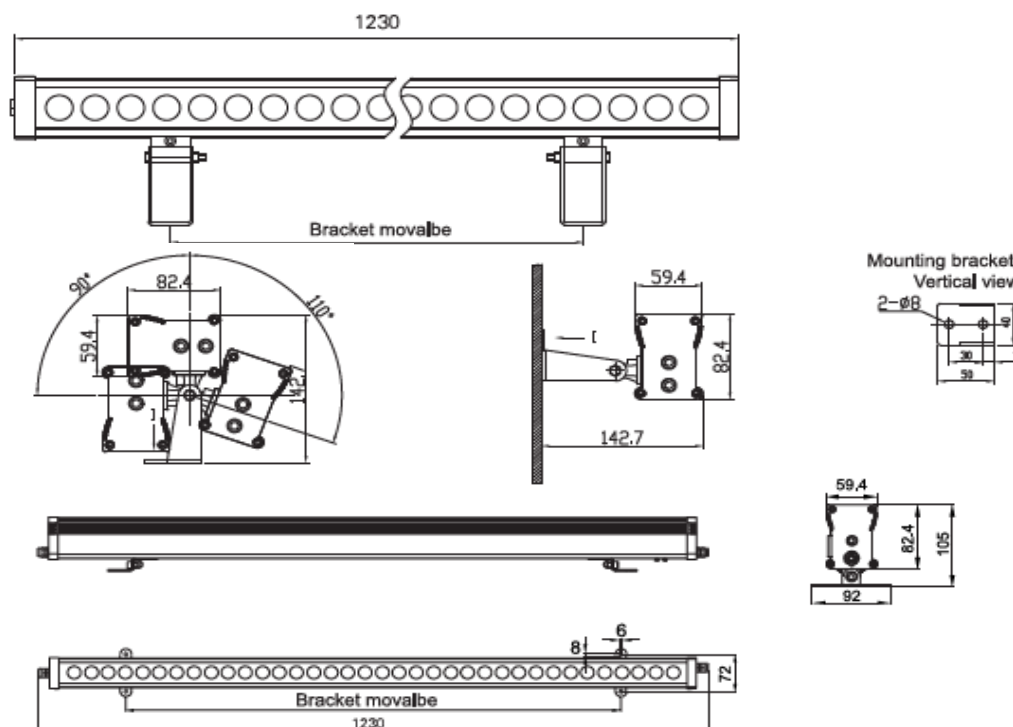
Code & Reference

20113344 IF3014A-36x1W-4525deg-RE-RGB-(AC100-240V)

Available beam angles:

RGB: 15°, 25°, 40°, 60°, 4525

Dimensions (mm)



IRIS 2002, S.A.

C/San Agustin, 17 28014 Madrid SPAIN

T. +34 91 429 42 99 F.+34 91 369 05 93

www.irisled.com

System Control (single color)



Remarks: (1) Maximum serial connective number of lights is 12PCS, new power cable is needed for over 12PCS;
 (2) Maximum serial connective number of lights is 5PCS for input voltage DC36V

System Control (color changing)



Remarks: (1) Maximun serial connective number of lights is 12 PCS, new power cable is needed for over 12 PCS;
 (2) Maximun serial connective number of lights is 5 PCS for input voltage DC36V
 (3) Lenght of signal cable is more than 300m or number of lights is more than 32PCS, new booster DCS-401 is needed.

Remarks: For the information of power cable-first cable, power cable-last cable, signal cable-first cable, signal cable-last cable,please refer to the accessories.